

PIANO

COMPADRE PEDRO JUAN

MERENQUE MM $\text{♩} = 110$

(IN 2)

D7 FILL G^b GMA⁹ G^b FILL

D7 FILL G^b

(X) PLAY BOTH TIMES ON D.S.

G D7 G G G G G G

G G#0 D7 D7

G Am⁷ G G Cm^b G D7 D7 D+7 G

2. G D7 G G G

(C) D7 BOTH X'S ON D.S. G^b GMA⁹ G^b

(D) SOLO D7 G GMA⁹ G D7

D7 G D.S. AL CODA

PIANO - COMPADRE

CODA



D7

G

D7

G



(PLAY 4 TIMES)

G

D7

1, 2, 3
G

4.

G

G4A9 G

D7

D7

G

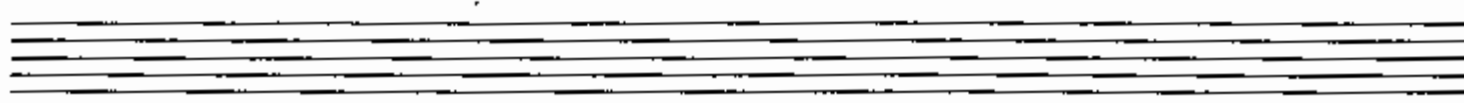
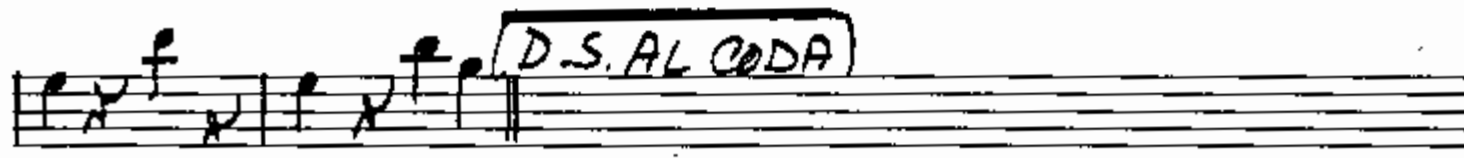
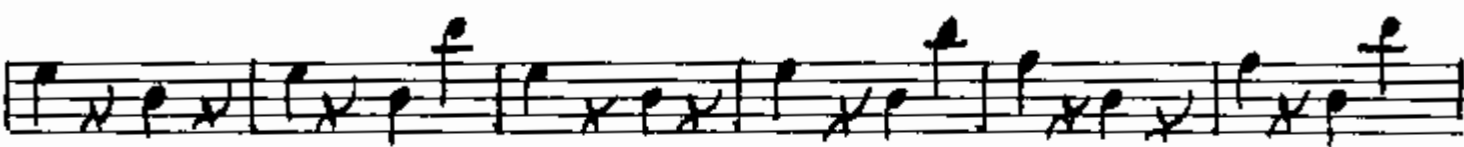
G2

BASS

COMPAÑERO PEDRO JUAN

MERENQUE MM $\text{♩} = 112$

(IN 2)



BASS - COMP ADRI

(CODA)

The musical notation is written on a single staff in treble clef with a key signature of one sharp (F#). The piece is in 4/4 time. The notation consists of the following measures:

- Measure 1: F#4 (quarter), G4 (quarter), A4 (quarter), B4 (quarter).
- Measure 2: C5 (quarter), B4 (quarter), A4 (quarter), G4 (quarter).
- Measure 3: F#4 (quarter), G4 (quarter), A4 (quarter), B4 (quarter).
- Measure 4: C5 (quarter), B4 (quarter), A4 (quarter), G4 (quarter).

A circled annotation "E-H" is placed above the first measure of the loop. A bracket above measures 3 and 4 is labeled "PLAY 4 TIMES". The first three measures of the loop are numbered "1, 2, 3." and the fourth measure is numbered "4.". The notation includes various rhythmic markings such as slurs, accents, and dynamic markings like "f".

Four empty musical staves are provided for additional notation.

DRUMS

COMPAÑERE PEDRO JUAN

MERENGUE MM $\text{♩} = 112$

(IN 2)

COW BELL

TOM TOMS

STICK ON RIM

BASS DRUM

(C) (TO CODA)

(D) D.S. AL CODA

[CODA]

DRUMS - COMPADRE

E-H PLAY 4 TIMES

The musical notation consists of three staves. The first staff contains a sequence of notes with 'x' marks above them, indicating specific drum sounds. It includes two measures with a '2' above a slash, likely representing a double bar or a specific drum pattern. The second staff begins with a measure containing '1, 2, 3' and a '2' above a slash, followed by a measure with a '4.' above it. The rest of the staff contains notes with 'x' marks and dynamic markings 'SD' and 'S.D.' in boxes. The third staff starts with a circled 'SD' and 'TTT' above notes, followed by a measure with a '7' above it and a final measure with a '7' above it.

A series of ten empty musical staves, each consisting of five horizontal lines, arranged vertically on the page.

1 ALTO SAX(AAT) COMPAÑERE PEDRO JUAN

MERENQUE MM $\text{♩} = 112$

(IN 2)

(S) PLAY BOTH TIMES ON D.S.)

1.

2.

(TO CODA) (LAST X.)

8
D.S. AL CODA

1 ALTO (ADT) COMPANIE

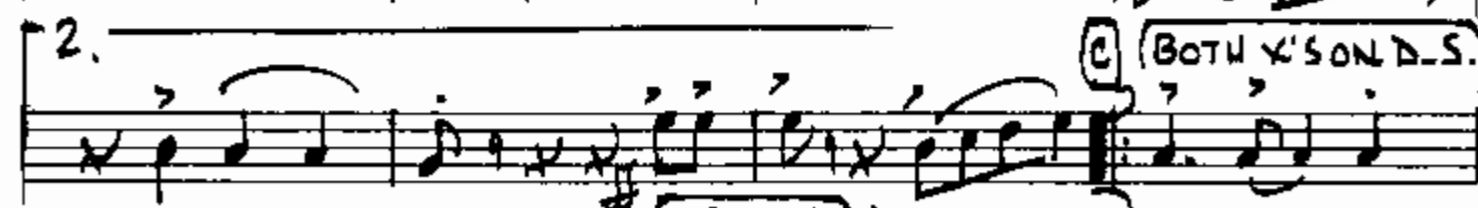
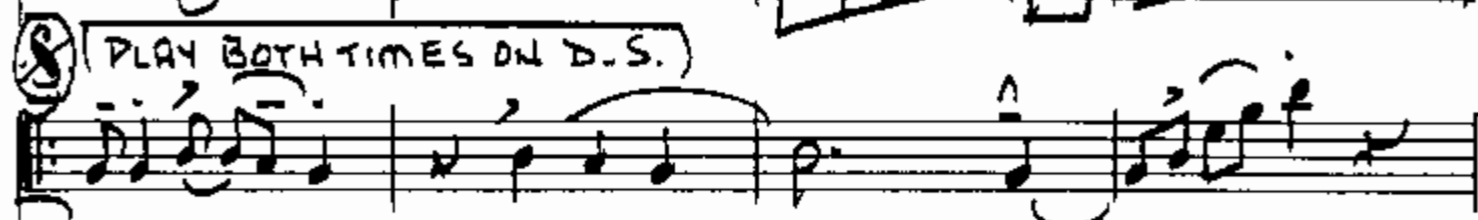
CODA

E-F-G-H

(PLAY 4 TIMES)

2 ALTO SAX(AAT) COMPAÑERE PEDRO JUAN

MERENGUE MM $\frac{2}{4}$



D.S. AL CODA

2 AUTOLOATA COMPADRES

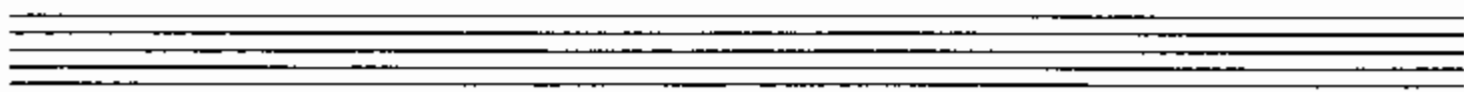
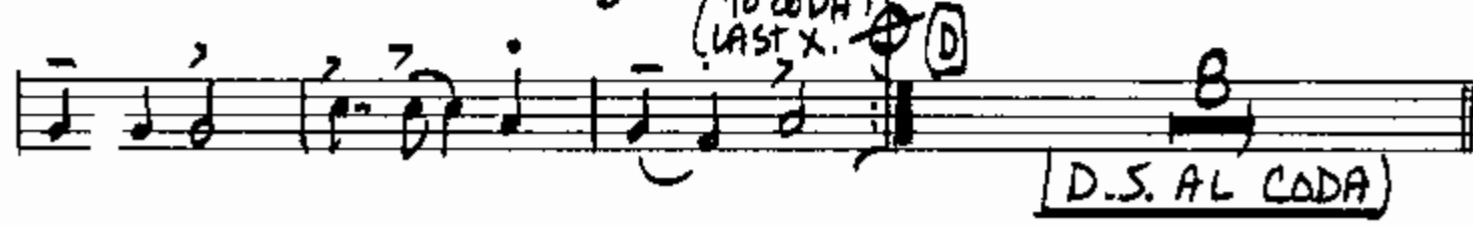
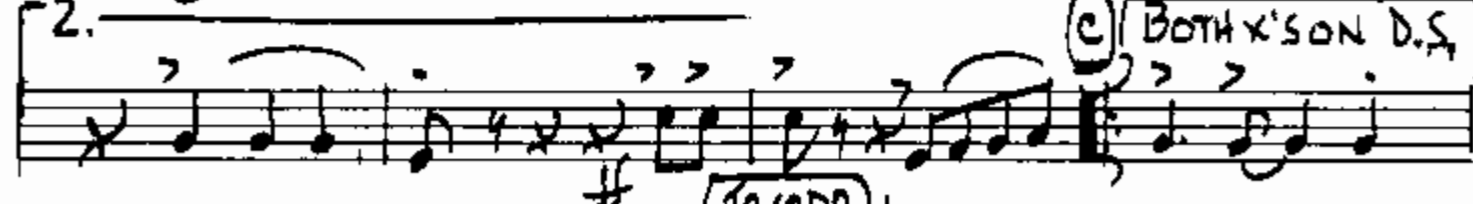
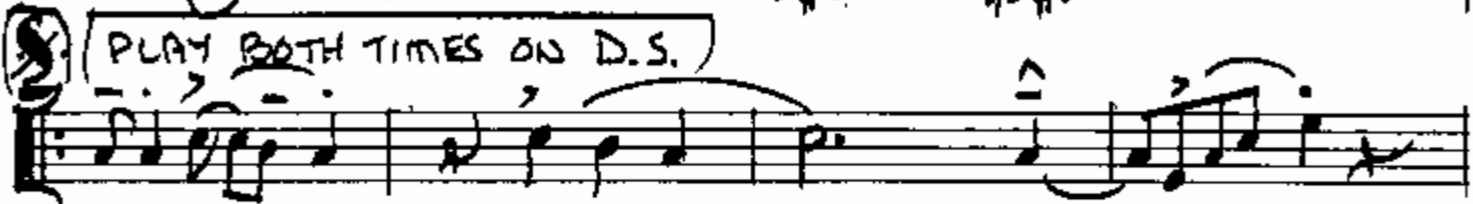
CODA

E-F-G-H PLAY 4 TIMES

1 TENOR SAX (AAT) COMPAÑERE PEDRO JUAN

MERENQUE MM $\text{♩} = 112$

(IN 2)



TENDE LA MÀ COMPADRE

CODA

E-F-G-H

(PLAY 4 TIMES)

1 TRUMPET

COMPAÑERE PEDRO JUAN

MERENGUE MM $\text{♩} = 112$

(IN 2)

1 TRIP - COMPADRE

Handwritten musical score for "1 TRIP - COMPADRE". The score is written on a grand staff with four systems of staves. The first system begins with a treble clef and a key signature of two sharps (F# and C#). The first staff of the first system contains a chord marked 'E' and a measure with a '7' above it. The second system of staves is marked with a chord 'F'. The third system is marked with a chord 'G'. The fourth system is marked with a chord 'H'. The music consists of rhythmic patterns with various note values, including eighth and sixteenth notes, and rests. There are several slurs and accents throughout the piece. The score concludes with a double bar line and a final chord marked 'H'.

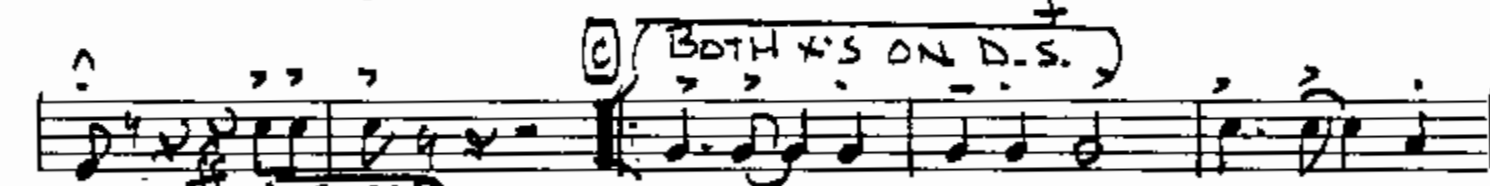
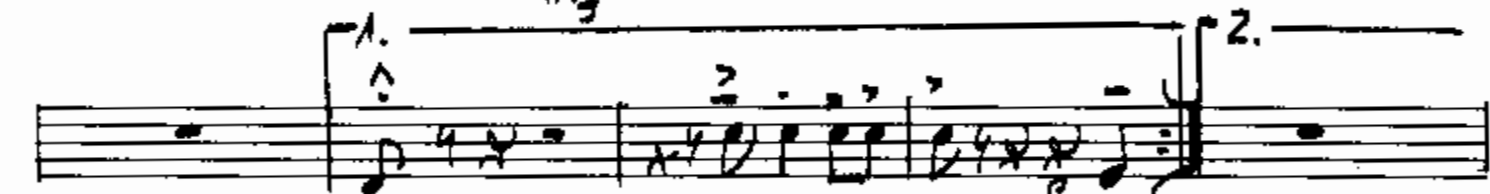
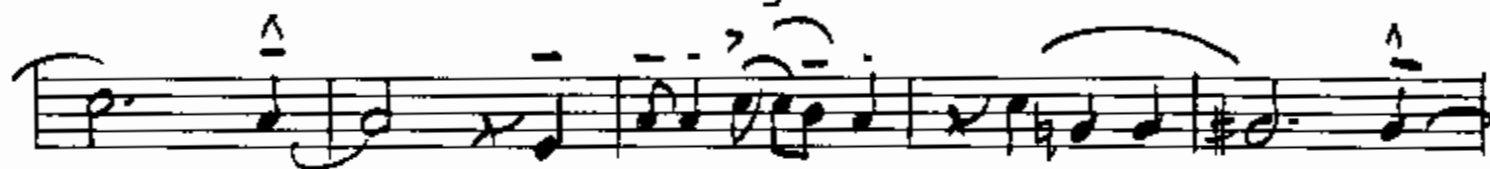
2 TRUMPET COMPADRE PEDRO JUAN

MERENQUE MM $\text{♩} = 132$

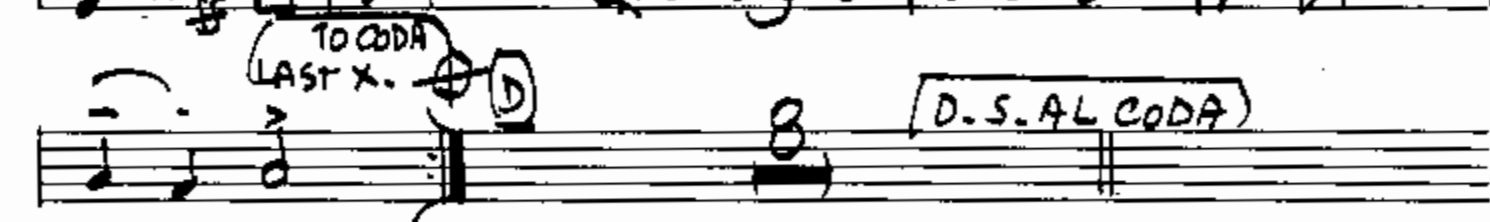
(IN 2)



(PLAY BOTH X'S ON D.S.)

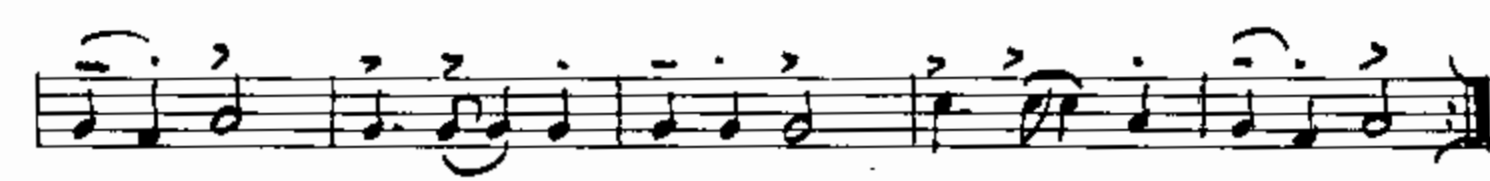


(BOTH X'S ON D.S.)



TO CODA
LAST X.

(D.S. AL CODA)



2 TREP-COMPADRES

A handwritten musical score for two treble clefs. The score is written on eight staves. The first staff begins with a treble clef, a key signature of two sharps (F# and C#), and a common time signature (C). The music is written in a rhythmic style with many eighth and sixteenth notes, often beamed together. There are several measures of rests and some notes with accents. The notation includes various rhythmic values, accidentals, and phrasing slurs. The score concludes with a double bar line and a repeat sign.

1 TROMBONE

COMPAÑEROS PEDRO JUAN

MERENQUE MA $\text{♩} = 112$

(IN 2)

Handwritten musical score for Trombone 1, featuring ten staves of music. The score includes various annotations and performance instructions:

- Staff 1:** (IN 2)
- Staff 2:** PLAY BOTH TIMES ON D.S.
- Staff 3:** (Empty staff with rests)
- Staff 4:** (Empty staff with rests)
- Staff 5:** 1. (First ending), 2. (Second ending)
- Staff 6:** (BOTH TIMES ON D.S.)
- Staff 7:** TO CODA LAST X, D.S. AL CODA
- Staff 8:** CODA
- Staff 9:** (Final staff with double bar line)

TEBEN-COMPADRES

A handwritten musical score for a piece titled "TEBEN-COMPADRES". The score is written on ten staves. The first staff begins with a circled letter 'E' and a treble clef with a sharp sign (F#). The music is written in a style characteristic of traditional Latin American folk music, featuring a mix of eighth and sixteenth notes, often beamed together. There are numerous accents (^) and slurs over the notes. The second staff starts with a circled letter 'F', the third with 'G', and the fourth with 'H'. The notation includes various rhythmic values and rests. The bottom two staves are mostly empty, with some faint markings and a few notes at the very end of the page.